

POSTGRADUATE INSTITUTE OF AGRICULTURAL BUSINESS MANAGEMENT, CHAKUR

<u>History and development</u>
<u>Growth of Institution</u>
<u>Milestone</u>
<u>Objectives</u>
<u>Mission</u>
<u>Organization & Governance</u>
<u>Mode of Admission UG/PG/Ph.D</u>
<u>System of Education</u>
<u>Curricula Development</u>
<u>Adoption</u>
<u>Physical Facilities</u>

History and Development:

MBA (Agriculture) professional management course aims to provide management education to entrants in the Commodity and Associate Agribusiness sector. The course is aimed at combining grass-root action with global competition and equips the students for managerial positions in Agri-industries management. Accordingly the course equips the students with the latest ideas and techniques in management and technology. Students under going this course can expect better opportunities of career advancement and would be better equipped to provide future leadership to the Agril. Based industries. Organizations also benefit substantially from the professional expertise acquired by the students through this course, based on accelerated learning approach to sharpen their managerial skills. Students are exposed to the state of the art developments in communication skill, self confidence, in cyber revolution through hands on skill acquisition in internet and other related developments.

Pursuant to the decisions of the government resolution vide letter no. Krishi dugdhvavsaya vikas and matsavavyavsaya vibhag MKV-1007/Letter No/185/7-A/ Mantralaya Extension dated 31.03.2009, of Government of Maharashtra, PG Institute Agril. Business Managemant (PGIABM), Chakur, District Latur (Maharashtra State) is being set up at Chakur campus.

[TOP](#)

PGIABM at Chakur, District Latur added one of the golden chapter in the history of Vasantrya Naik Marathwada Agricultural University, Parbhani, a leading Agricultural University in the Maharashtra State. This institute found agribusiness as a tool to sharpen the edges of the agriculture system in the region as well as in the country. This institute will establish its own standards in the field of agribusiness and keeping an eagle eye on the market and its changing environment so that it can mould itself and its students accordingly. Due to non availability of infrastructure facilities at Chakur campus Initially the institute is started in the Latur campus from 2009. In the year 2011 all the required infrastructure facilities viz. college building, boys and girls hostel, guest house and internal roads were completed in the chakur campus with the financial Aid from state government and Institute is shifted to Chakur campus from the academic year 2011-12.

TOP

Milestones:

- Development of Infrastructure facilities and beautification of campus.
- To impart need based quality education.
- To provide essential knowledge and trainings to become successful entrepreneur.
- Academic collaboration with national and overseas institutes.
- To start PG Diploma courses(1 yr. duration) in specialized fields.

MISSION:

Our mission is to achieve managerial excellence in agribusiness sector of the country by providing qualified, well trained, motivated and committed Graduate managers.

The objectives of the College:

1. To impart education and training to young men and women for developing managerial skill in various areas of agribusiness and other sectors of economy.
2. To offer training courses for policy makers, executives and those in charge of agribusiness projects;
3. To conduct research on problems in agribusiness sector and to improve the management of agricultural enterprises and projects, and
4. To assist agribusiness organizations in solving their management problems by providing consulting services.

TOP

ORGANIZATION AND GOVERNANCE

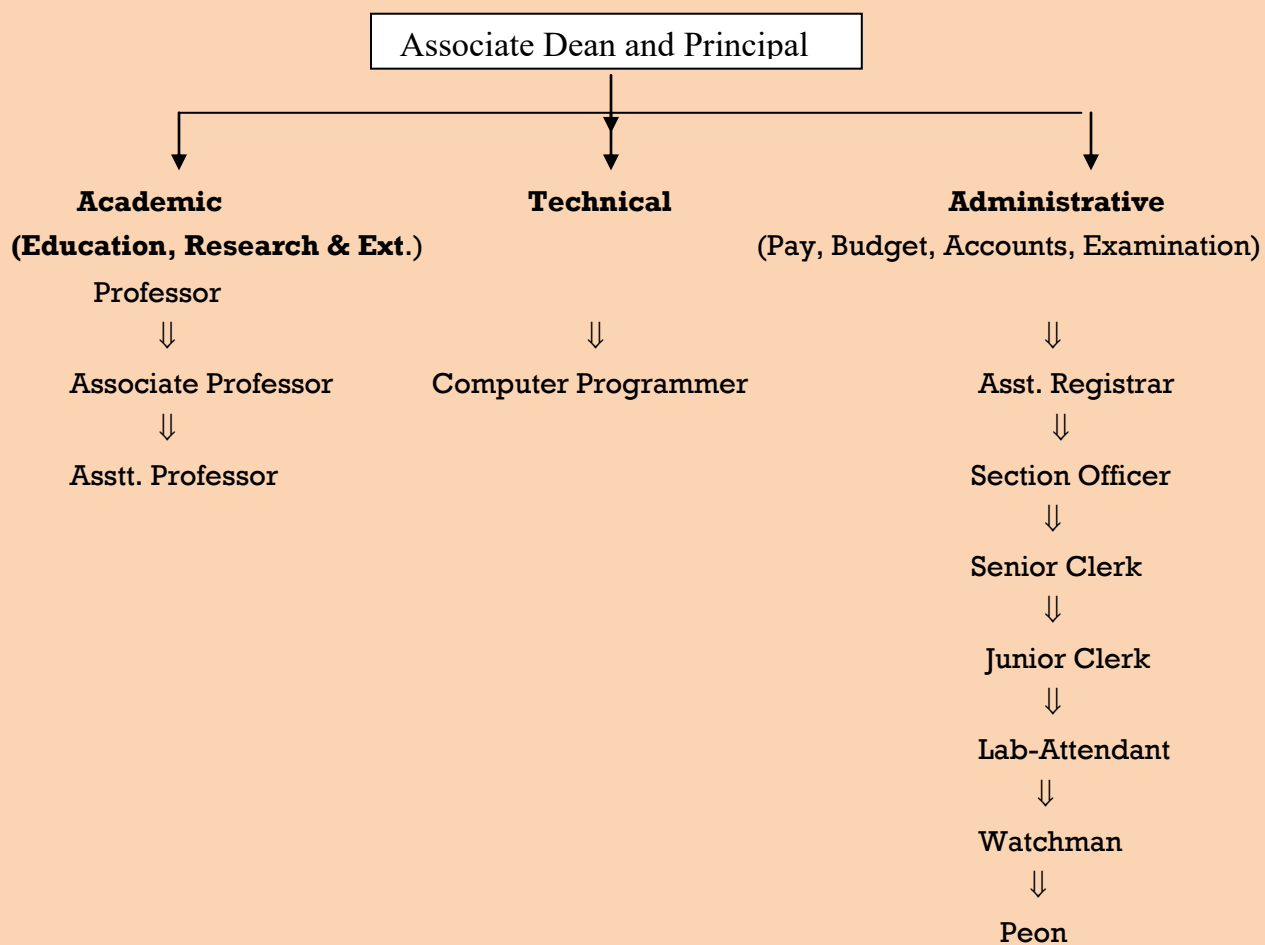
Authorization

Associate Dean and Principal of the College is authorized to guide and monitor the working of the institute.

Authorities and their composition, powers and responsibilities

The Faculty follows the Maharashtra Agricultural Universities (Krishi Vidyapeeth) Statutes resolved in the year 1990.

Organizational structure



[TOP](#)

Mode of admission for Post graduate degree programme

Since academic year 2005-06 the common Entrance Test (CET) is conducted by Maharashtra Agricultural University Examination Board, Pune for admission of the students to Post graduate degree programme in SAUs. 30% weightage of UG CGPA and 70% with weightage of CET marks is considered for admission to the PG degree programme.

The MCAER Pune coordinate, centralise online admission in SSAU of Maharashtra for PG. An advertisement is published in leading newspapers in the month of Sept/August and the applications in the prescribed proforma are called from the eligible candidates for post graduate courses. The detailed regarding PG courses, colleges with their intake capacities, reservations of seats, documents to be enclosed with the application form are given in the prospectus. The admission procedure is given in the prospectus. The Maharashtra Council of Agricultural Research Education and Research, Pune publishes the prospectus with all these details.

U quota and M quota

Out of total admissions 50% admissions are filled from U quota (from the candidates passed qualifying examination from colleges of University jurisdiction) and 50% from M quota from the students who have passed qualifying examination in Maharashtra State.

Other State quota (OS quota)

The 2% seats reserved for the candidates having the domicile of other State from India and whose parents have not stayed in Maharashtra State for minimum of three years within the period of ten years preceding the admission year, such seats shall be termed as Other State Quota: OS quota.

ICAR quota

25% of the total seats for all M.Sc. courses shall be reserved to be filled in from all India basis through Common Entrance Examination to conducted by ICAR, New Delhi (it includes 10 % seats over and above the sanctioned intake capacity). This provision relates to constituent colleges.

The constitutional reservation is followed as per directives of state government.

[TOP](#)

Physical facilities (Infrastructure)

1. Institutional land area :

Post Graduate Institute of Agri-Business Management, Chakur is having 10 ha. Land out of this 2 ha is used for construction of college building, hostels, Guest house and roads.

2. Class rooms, libraries and laboratories :

The institute is having 4 classrooms with audio visual facilities. The library with reading hall for girls and boys with around 1000 books is situated in the college building.

3. Laboratories:

As per the course curriculum only computer laboratory is available with 30 computers and internet facilities.

4. Library :

Library with reading halls is available for student in college building. Approx. 1000 books and reference books are available for students.

5. Computer centre :

Separate computer laboratory with internet facility is available in the college.

6. Seminar hall :

Seminar Hall is available with audio visual facilities with seating capacity of 80 students.

7. Boy's hostel:

Separate Boy's and girls hostel is available within campus which will accommodate 80 students.

8. Faculty quarters:

Presently staff quarters are not available in the campus but in the plan it is proposed and funds are approved by state government.

9. Student development :

The faculty was started in the year 2009 and 4 batches are passed out from the institute. The passed students are working in various sectors like banks, seed industries, fertilizer industries etc. few students are doing higher studies abroad.

For the development of student's communication skill and self confidence trainers were invited every year.

For the placement of students in various organization campus interviews are conducted every year in the campus.

10. Faculty (Manpower) : Academic staff :

Govt. of Maharashtra sanctioned 21 positions of academic staff which includes 3-Professors, 10- Associate professors, 7- Assistant Professors and 1-Director/Asso.Dean.

The sanctioned positions are not filled yet. Around 6-9 visiting faculties from various parts of country are appointed for the teaching purpose.

TOP