

COLLEGE OF AGRICULTURE, BADNAPUR

| |
|--|
| <u>History and development</u> |
| <u>Growth of Institution</u> |
| <u>Milestone</u> |
| <u>Objectives</u> |
| <u>Mission</u> |
| <u>Organization & Governance</u> |
| <u>Mode of Admission UG/PG/Ph.D</u> |
| <u>System of Education</u> |
| <u>Curricula Development</u> |
| <u>Adoption</u> |
| <u>Physical Facilities</u> |

History and Development of the Institution

Previously there were only two Agriculture College in the Marathwada region with 274 intake capacity. The interested students for Agriculture stream is more than about 6000. These aspirants are unable to seek to course due to limited intake strength in agriculture stream. The result was that these aspirants are compelled to seek admission elsewhere in non agricultural colleges. The state government also initiated various related programs in agriculture viz; processing of agriculture produce, export of fruits and agriculture produce, canned food products etc. taking into consideration the future expanding opportunities in the field, there was necessity in creating opportunity to initiate advance need based education. To overcome the shortage of agricultural graduates, govt. of Maharashtra has established College of Agriculture, Badnapur, Dist Jalna vide G.R. No krushi & Padam Vibhag No Purak/1099/pk-38/25 dated 29th March 2000 with an objective to provide maximum educational opportunity and challenge for students of high ability from rural area.

The intake capacity of college was up to 2009-10 was 32+ ICAR, then it was doubled from 2010-11 which was taught through advance teaching material with the use of well planned teaching aids.

TOP

Objectives:-

- To fulfill expected demand of Agriculture Graduates.
- To impart intensive training in different aspect of agricultural technology to UG students
- To train students about research on various components of agricultural technology,
- To train personals from agriculture as a manpower in global market.

- To disseminate the innovative and viable technologies for increasing the productivity and production of the region.
- To intensify research on post harvest losses and evolve improved methodology for storage and transportation.
- To generate technology well suited for agro-based small-scale industries in the rural areas as an entrepreneur.
- To provide technical advice and guidance to the entrepreneurs in the state and the country.
- To assess and help to the Government of Maharashtra in planning, monitoring and also formulating agricultural development policies.
- Dissemination of newly developed agricultural technology among the general public through RAWE programme and also through electronic and print media such as TV, radio and popular publications, etc.

The college has initiated its educational process by imparting the advanced teaching aids. The college has entered in its thirteenth year with about 600 graduates.

Now the college has been made capable to starting new research projects based on needs of farmers assisting peoples to overcome their constraints through imparting advanced techniques of farming. Similarly the technical staff are providing training, the state department staff for doing extension work.

[TOP](#)

ORGANIZATION AND GOVERNANCE

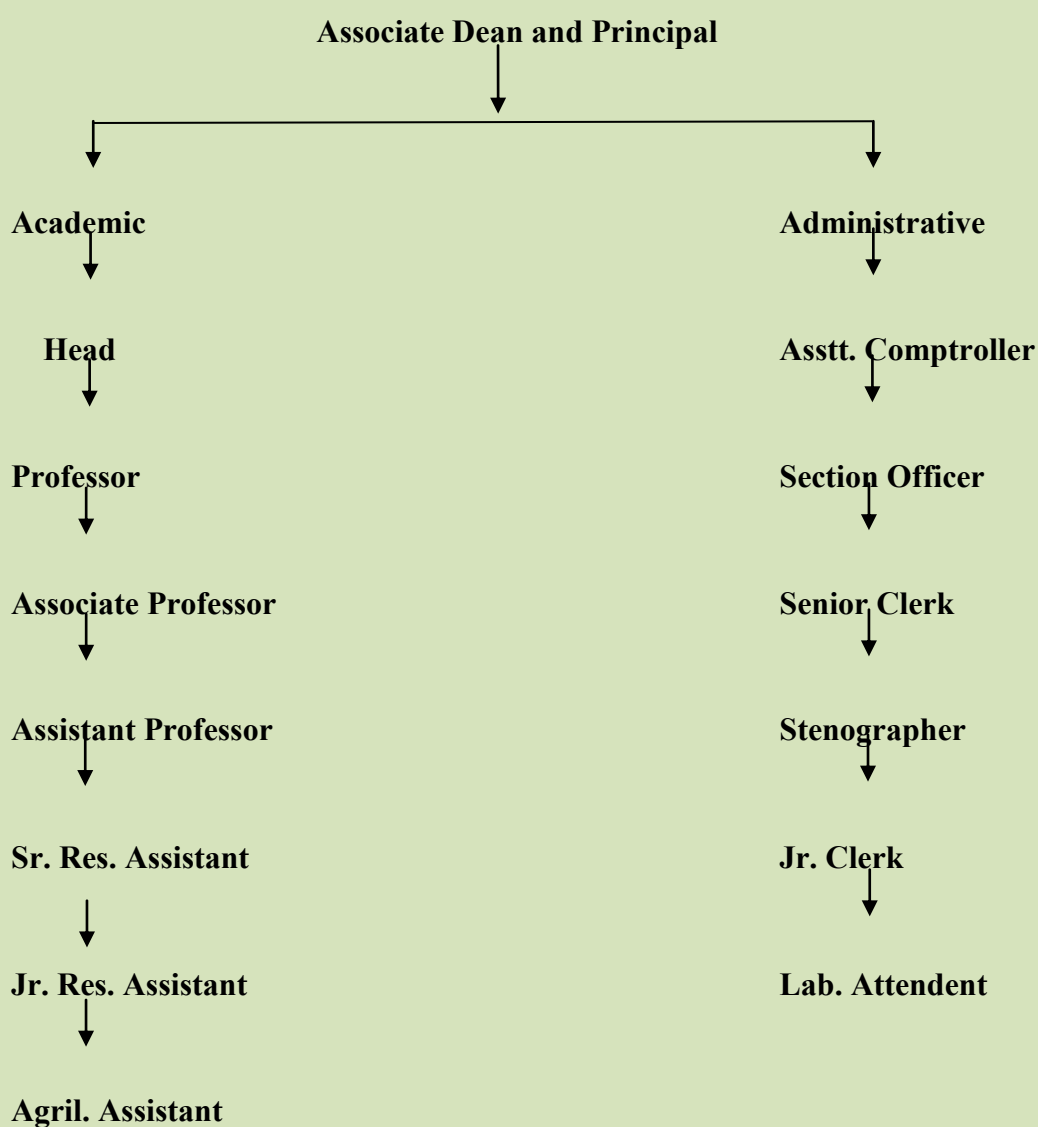
Authorization

Associate Dean and Principal of the College is authorized to guide and monitor the working of the institute.

Authorities and their composition, powers and responsibilities

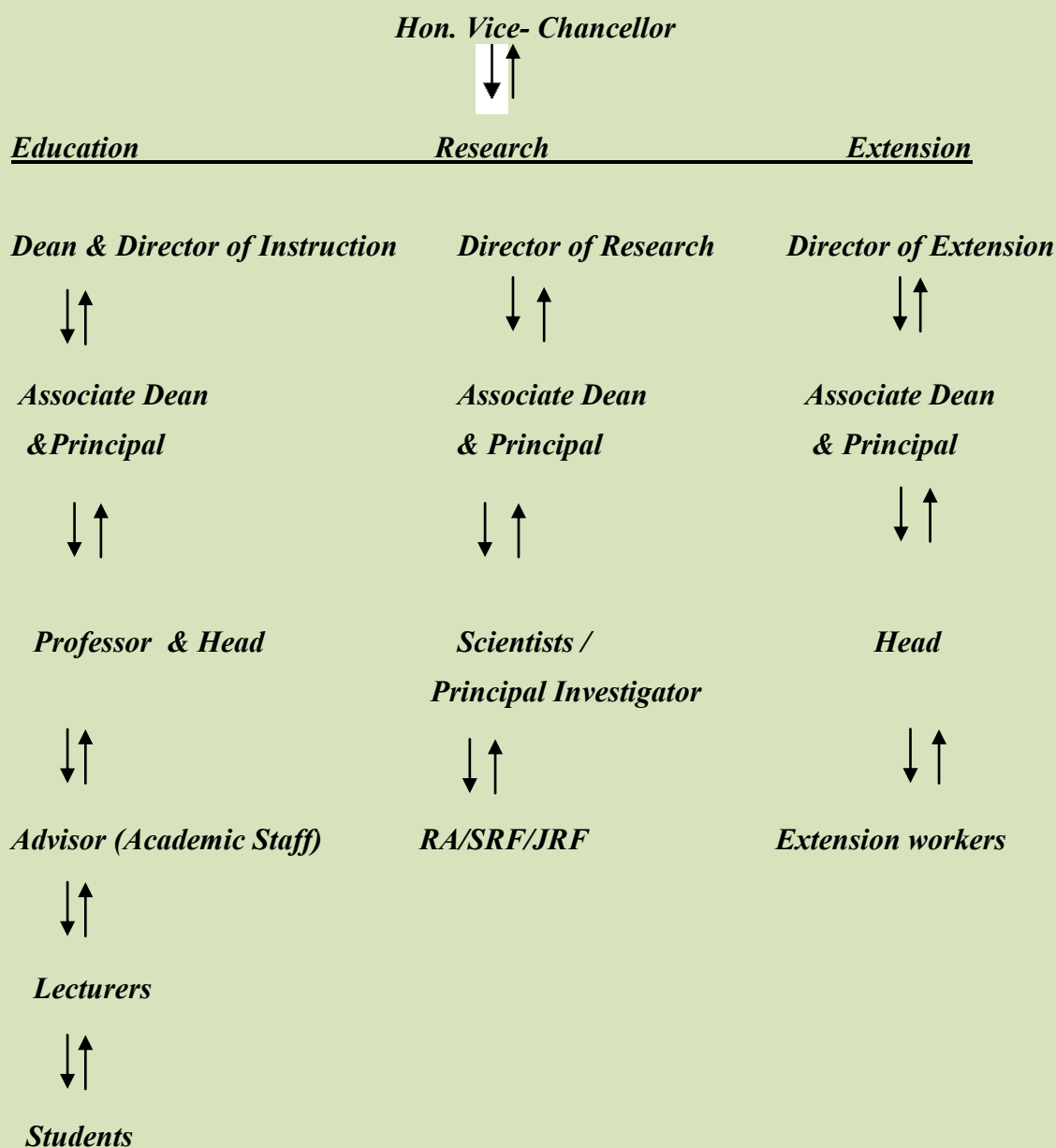
The Faculty follows the Maharashtra Agricultural Universities (Krishi Vidyapeeth) Statutes resolved in the year 1990.

Organizational Structure



[TOP](#)

Flow charts indicating channel of communication within the institution involving various authorities and different constituents of the University



[TOP](#)

Mode of admission for under graduate degree programme

The MCAER Pune implement and coordinate centralise online admission of UG for SAU in Maharashtra. An advertisement is published in leading news papers by MCAER, Pune in the month of May/June after declaration of the XII std. results. Applications in the prescribed proforma are called from eligible candidates for under graduate courses. The details regarding UG courses, colleges with their intake capacities, reservations of seats

documents to be enclosed with the application form are given in the advertisement. The admission procedure and schedule/calendar are given in the prospectus. Students 12th standard marks along with additional 20% marks (vocational courses, 7/12 and landless labour certificate) are considered for admission to UG degree programme.

University quota (U quota), Maharashtra quota (M quota):

For admission to under graduate courses, 70% seats of the admission capacity will be filled in from amongst the students who have passed the qualifying examination from the school or the institution situated in the University area (U quota) and remaining 30% seats will be kept open for all the students i.e. State quota (M quota). Admission to all the under graduate degree programme are on merit basis.

Other State quota (OS)

The 2% seats reserved for the candidates having the domicile of other State from India and whose parents have not stayed in Maharashtra State for minimum of three years within the period of ten years preceding the admission year, such seats shall be termed as Other State Quota : OS quota.

ICAR quota

25% of the total seats for all U.G. courses shall be reserved to be filled in from all India basis through Common Entrance Examination to conducted by ICAR, New Delhi (it includes 10 % seats over and above the sanctioned intake capacity). This provision relates to constituent colleges. The constitutional reservation is followed as per directives of state government.

[TOP](#)

Mode of admission for Post graduate degree programme

Since academic year 2005-06 the common Entrance Test (CET) is conducted by Maharashtra Agricultural University Examination Board, Pune for admission of the students to Post graduate degree programme in SAUs. 30% weightage of UG CGPA and 70% with weightage of CET marks is considered for admission to the PG degree programme.

The MCAER Pune coordinate, centralise online admission in SSAU of Maharashtra for PG. An advertisement is published in leading newspapers in the month of Sept/August and the applications in the prescribed proforma are called from the eligible candidates for post graduate courses. The detailed regarding PG courses, colleges with their intake capacities, reservations of seats, documents to be enclosed with the application form are

given in the prospectus. The admission procedure is given in the prospectus. The Maharashtra Council of Agricultural Research Education and Research, Pune publishes the prospectus with all these details.

[TOP](#)

U quota and M quota

Out of total admissions 50% admissions are filled from U quota (from the candidates passed qualifying examination from colleges of University jurisdiction) and 50% from M quota from the students who have passed qualifying examination in Maharashtra State

Other State quota (OS quota)

The 2% seats reserved for the candidates having the domicile of other State from India and whose parents have not stayed in Maharashtra State for minimum of three years within the period of ten years preceding the admission year, such seats shall be termed as Other State Quota: OS quota.

ICAR quota

25% of the total seats for all M.Sc. courses shall be reserved to be filled in from all India basis through Common Entrance Examination to conducted by ICAR, New Delhi (it includes 10 % seats over and above the sanctioned intake capacity). This provision relates to constituent colleges.

The constitutional reservation is followed as per directives of state government.

System of Education

The College adopted course credit system under the semester pattern. In this system each academic year is divided into two terms not less than 20 weeks called semester. Subjects to be taught are divided into self contained units called courses. These are taught in a semester through lecturers practical's, library reading, and field work assignments etc.

The students admitted to B.Sc. (Agri.) degree course have to complete one semester as rural work experience in the farmer field as per the recommendation of IV Dean's Committee report of ICAR, New Delhi. The getting hands on training the students are exposed to VIII semester for Experimental Learning Programme.

[TOP](#)

Academic Regulations

MCAER pune is constituted under Section 12 of the Maharashtra Agricultural Universities (Krishi Vidyapeeth) Act, 1983 to coordinate educational activities in SAU Of Maharashtra .Academic regulations for U.G., PG and Ph.D. are approved by the Maharashtra Council of Agricultural Education Research (MCAER), Pune.. These rules are applicable to all the Agricultural Universities in the State, since 2011. The rules and regulations are approved by the Maharashtra Council of Agricultural Education and Research in its 84th and 86th meeting held on 25.7.2011 and 19.4.2012 vide Resolution NO.102/84/2011and 4/86/2012 respectively. These regulations made available to the faculty of the College and also available on the web of University.

[TOP](#)

Curricula Development/Revision Process

The academic curricula is regularly updated and revised in the light of the developments place and as per the theoretical and practical requirements of different and programmes. Some course/subject in degree programme is added while those old are obsolete from the curricula.

A new and revised curriculum for under graduate degree programmes has been introduced in operation since academic year 2007-08 in accordance with recommendations of IV Dean's Committee of ICAR, New Delhi.

A new and revised curriculum for post graduate degree programmes was introduced and is in institution since academic year 2009-10 as per the directives of the NCG and ICAR, New Delhi. Syllabus is revised after 10 years by Dean's Committee.

Adoption of ICAR Model Curricula and Deviation

U.G. courses

As per the IV Dean's Committee the new degree course/subject based Academic programmes are implemented from 2007-08.

[TOP](#)

PHYSICAL FACILITIES (INFRASTRUCTURE)

Institutional land area

Class rooms, Libraries and Laboratories

Laboratories

Library

As central university library is close to the college building, students and staff members are exclusively using central library.

Computer Centre

There is separate building for central computer cell in the building in which 35 computers are established for exclusive use of students.

Seminar Hall

Boy's hostel

Faculty quarters

[TOP](#)